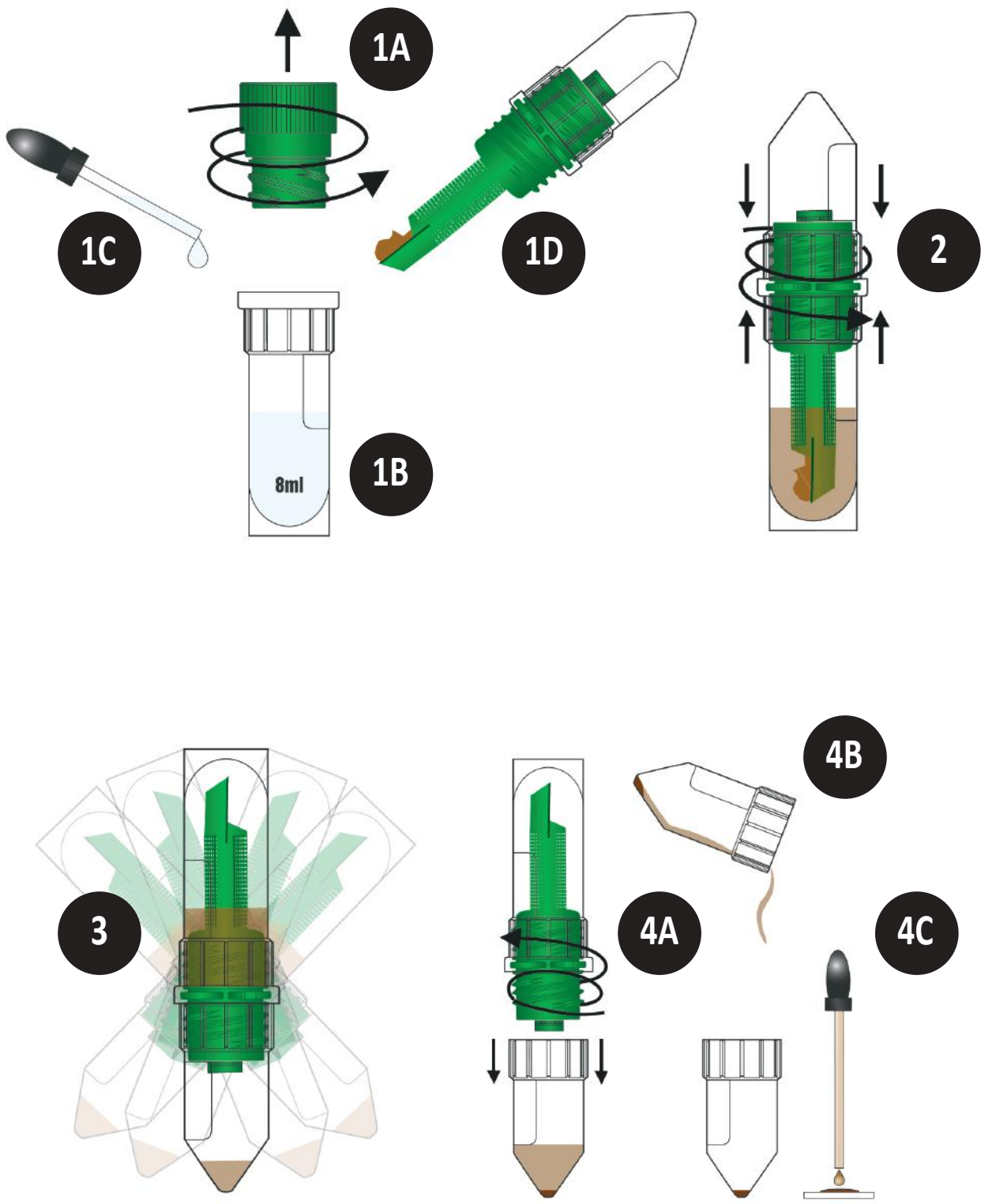


Midi Parasep® SF Faecal Parasite Concentrator



See label for storage conditions and expiry date. Please adhere to the following guidelines when handling Midi Parasep® SF. To avoid cross contamination the Midi Parasep® SF device should remain closed at all times except when introducing the sample or when retrieving the final concentrated sample for examination.

Sample Preparation

For empty Midi Parasep® SF.

- 1A Unscrew lid.
- 1B Add 8.0ml of fixative.
- 1C Add one drop of surfactant (eg: Apacor Triton X solution) to the chamber.

Alternatively, use reagent ready Midi Parasep® SF.

1D Introduce a level scoop of formed faecal sample (equivalent 1g) to the fixative using the spoon at the end of the Midi Parasep® SF filter. For liquid samples, add 2 level scoops (equivalent 2g) to the fixative. Mix in thoroughly with the Midi Parasep® SF spoon. If the sample is hard, break it up with the end of the spoon.

Emulsification

- 2 Seal Midi Parasep® SF by screwing in the filter/sedimentation cone unit. Vortex or shake to emulsify with the sedimentation cone pointing upwards.

Centrifugation

- 3 Invert Midi Parasep® SF and centrifuge at 400g for 2 minutes.

(J. Clin. Microbiol. doi:10.1128/JCM.00838-15)

Midi Parasep® SF fits all 50ml centrifuge buckets.

NOTE: To calculate the required RPM for any centrifuge

$$\text{RPM} = \sqrt{\frac{g}{1.12r}} \times 1000$$

RPM Rotor Speed in revs/min

g centrifugal force (max. 1000g)

r radius, horizontal distance between sedimentation cone tip and spindle centre measured in mm

Examination

- 4A Unscrew and discard the filter and mixing tube.
- 4B Pour off all the liquid above the sediment.
- 4C Pipette one drop of sediment onto a slide and cover with coverslip.

Alternatively, follow laboratory SOP for slide preparation.



CE marking (European Regulation (2017/746) on in vitro diagnostic medical devices)



For in vitro diagnostic use



Catalogue number



Batch code



Expiry date MM/YYYY



Storage temperature limitation



Manufacturer



Consult instruction for use

Midi Parasep[®] SF Faecal Parasite Concentrator



<u>Code</u>	<u>Product</u>
149900	Midi Parasep [®] SF

Discard in accordance with your standard and local operating procedures for clinical waste.

Distributed by: R- Biopharm Australia Pty Ltd
34 Woodfield Boulevard
Caringbah NSW
Phone 1800 023 623
Email: sales@labdiagnostics.com.au

Products can be ordered direct from Apacor or from an appointed distributor
Visit our website for all the latest information www.apacor.com or e-mail: orders@apacor.com
